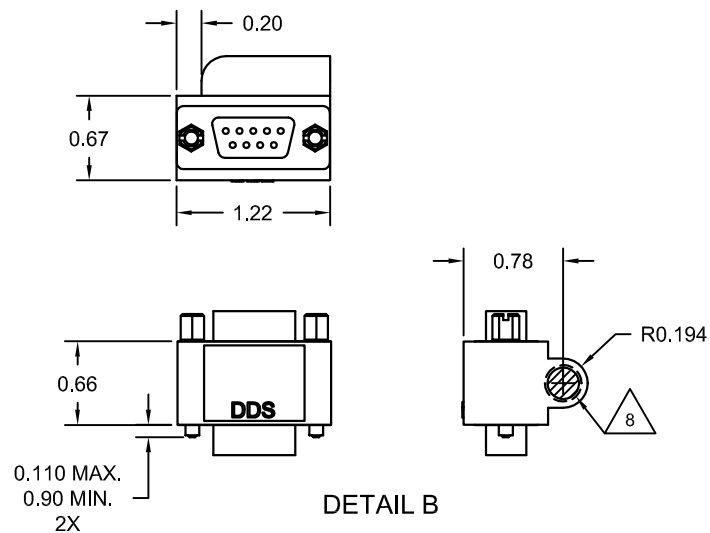
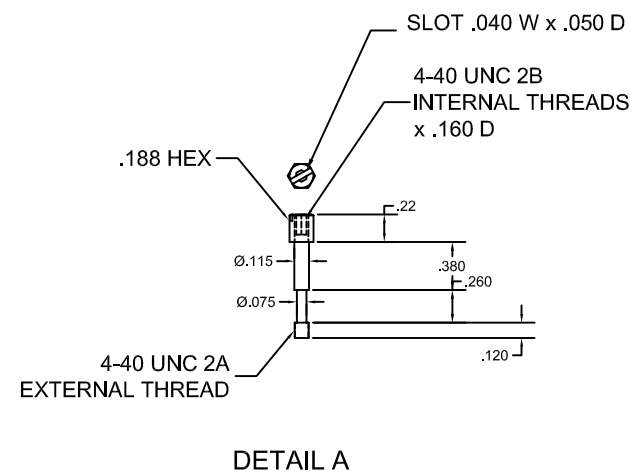
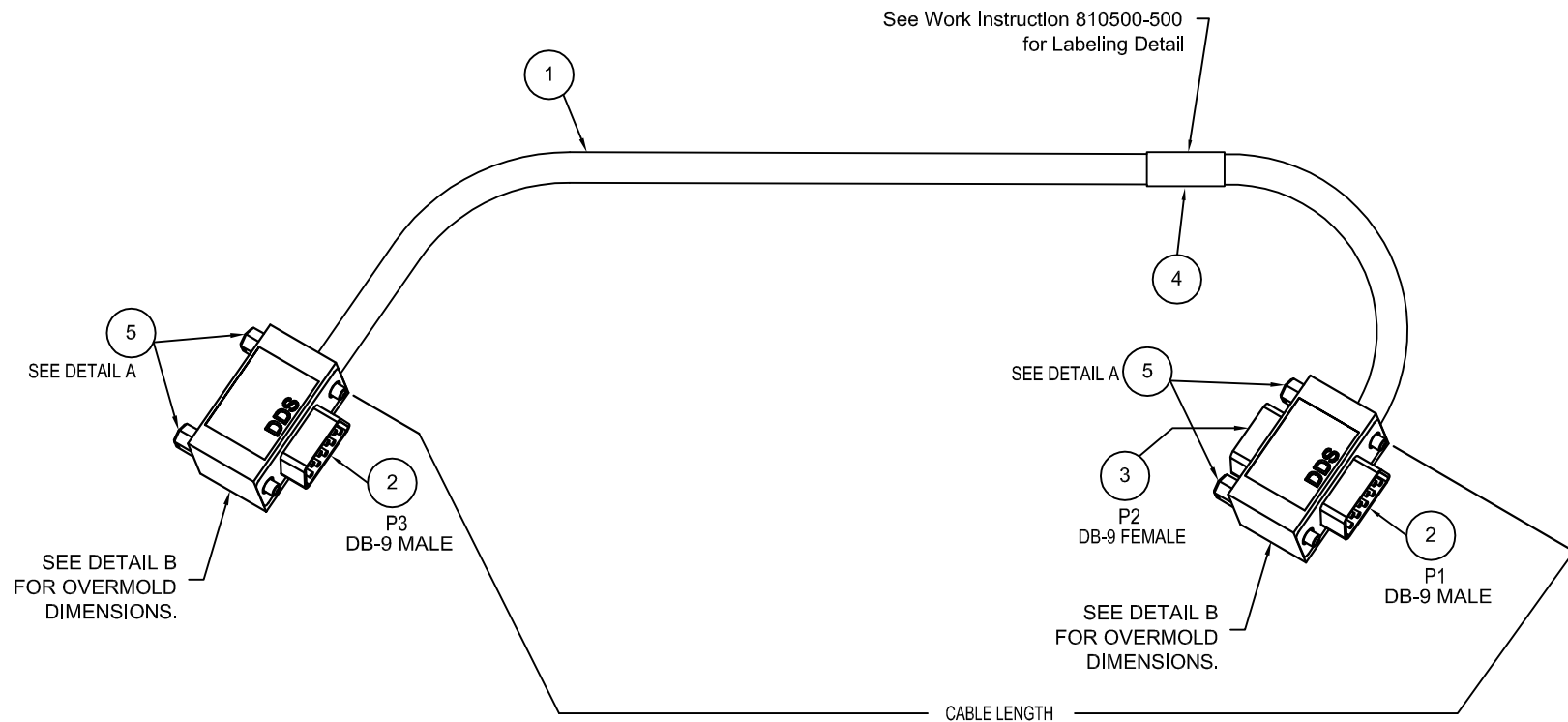
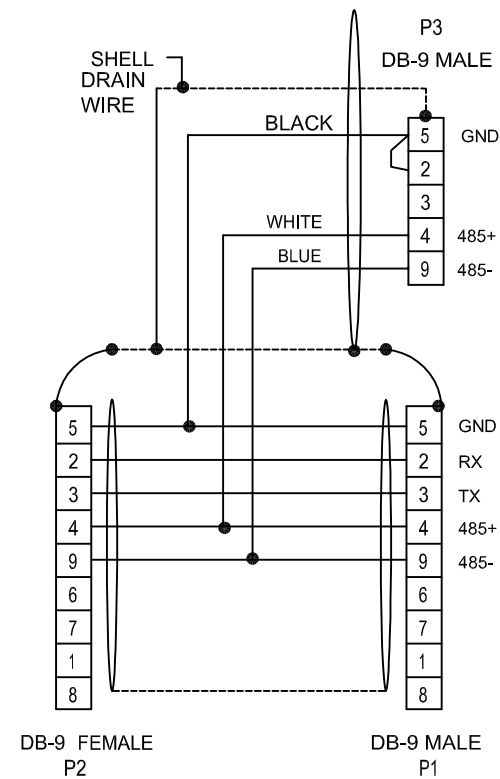


WIRING DIAGRAM



NOTES:

- 1 P1 & P3 CONNECTOR: D-SUB 9 PIN MALE, TIN PLATED SHELL WITH DETENTS  
CONTACTS: GOLD FLASH  
SHIELDING: COPPER FOIL 100% COVERAGE ALL SEAMS SOLDERED.
- 2 P2 CONNECTOR: D-SUB 9 PIN FEMALE, TIN PLATED SHELL  
CONTACTS: GOLD FLASH  
SHIELDING: COPPER FOIL 100% COVERAGE ALL SEAMS SOLDERED.
- 3 HARDWARE: STEEL, NICKEL PLATED
- 4 OVERMOLDING: BLACK PVC MUST NOT EXCEED 1.22 DIM
- 5 WIRE LIST: SEE WIRE DIAGRAM
- 6 PARTS MUST RECEIVE 100% CONTINUITY TEST PER WIRE LIST, MEASURE RESISTOR
- 7 ALL PINS CAPABLE OF HIPOT WITHSTAND 100 VDC
- 8 HOG RING, ONE PER END, MUST NOT SHOW THROUGH OVERMOLD OR DAMAGE WIRES.  
HOG RING IS CRIMPED OVER CABLE JACKET AND LOCATED WITHIN OVERMOLD.
- 9 FOR REWORK ON EXISTING CABLES ONLY:  
REWORK IS NOT ACCEPTABLE ON NEW CABLE DELIVERIES. 30 AWG PVC INSULATED WIRE 250030-03 MAY BE SOLDERED AT BASE OF PINS 2 AND 5 AT P3 AND CABLE RELABELLED TO REV. A3. NO SOLDER MAY EXTEND MORE THAN .040 INCH UP ON PINS.

NOTE: Cable to be tested per Control Techniques "CT" requirements. See BOM for drawing/Document numbers that refers to CT's mechanical and electrical requirements in this assembly.

						UNLESS OTHERWISE SPECIFIED DIMENSIONS ARE IN INCHES TOLERANCES ON		12005 TECHNOLOGY DR. EDEN PRAIRIE, MN 55344			
						±	2PLC .01			3PLC .005	ANGLE .50°
						MATERIAL: SEE BOM		DESCRIPTION: DRAWING, CABLE ASSEMBLY, DDS			
						FINISH: NONE					
A3	4165	3/19/04	AFC	<i>[Signature]</i>	3/24/04	DWG BY DATE GENE S 1/16/98		SIZE C	FSCM NO.	DWG NO. 810720-000	REV A3
A2	3400	1/11/00	BJD	<i>[Signature]</i>	1/21/00	ENG. APPD/CHK DATE <i>[Signature]</i> 5/27/98					
A1	3025	3/5/98	BMA	<i>[Signature]</i>	5/27/98			SCALE N/A		SHEET SHT 1 OF 1	